

# HP Universal Fax Driver v 2.0.193.7861

## Release Notes

The HP Universal Fax Driver is a solution installed on a client or server PC that helps user fax a document from the PC without walking up to a fax enabled MFP. It solely provides users access to a range of HP fax devices--in the office--without downloading separate drivers for every HP fax device. The HP Universal Fax Driver works well with a broad range of networked and direct-connected HP fax enabled Enterprise Multifunction Printers (MFPs). The UFD can install in Traditional Mode or Dynamic Mode to enhance fax experience. Dynamic Mode discovers fax enabled network MFP devices, or users can manually enter an IP address/host name and send fax. It's great when users want to fax using a new device but do not have a model specific fax driver installed. Traditional Mode is just like a traditional driver. Both modes can be used on the same PC.

## Disclaimer

© 2019 Copyright HP Inc.

Reproduction, adaptation, or translation without prior written permission is prohibited, except as allowed under the copyright laws. The information contained herein is subject to change without notice. The only warranties for HP products and services are set forth in the express warranty statements accompanying such products and services. Nothing herein should be construed as constituting an additional warranty. HP shall not be liable for technical or editorial errors or omissions contained herein.

## Acknowledgements

- Microsoft, Windows, Windows XP, Windows Vista, Windows7, Windows 8, Windows 8.1, Windows 10, Windows Server 2008, Windows Server 2012, Windows Server 2012 R2, Windows Server 2016 and Windows Server 2019 are U.S. registered trademarks of Microsoft Corporation in the United States and/or other countries
- Adobe and Acrobat are trademarks of Adobe Systems Incorporated.
- Citrix, XenApp, and XenDesktop are trademarks of Citrix Systems, Inc.

## Version

Universal Fax Driver version 2.0.193.7861  
Release Note edition 8 – Oct 9, 2020

## Description

The HP Universal Fax Driver is available as a free download from [www.hp.com/support/ufd](http://www.hp.com/support/ufd). This version release has the following attributes:

- Available for both 32-bit and 64-bit operating systems

## Supported Product Models

Model support announced in this release listed below. Please reference [www.hp.com/support/ufd](http://www.hp.com/support/ufd) for the current supported HP device list.

- Officejet 6500 E710a-f
- Officejet 6500 E710n-z
- HP Officejet 7500 E910
- HP Officejet Pro 8500 A910
- HP Officejet Pro 8600
- HP Officejet 6700
- HP Officejet 6600
- HP Officejet Pro X476 series
- HP Officejet Pro X576 series
- HP Deskjet 4620 series
- HP Officejet 4610 series
- HP Photosmart 7520 series
- HP Officejet Pro 276dw MFP
- HP Officejet Pro 3620
- HP Officejet 7610 series
- HP Officejet Pro 8630
- HP Officejet Pro 8620

- HP Officejet Pro 8610
- HP Officejet Pro 8660 e-All-in-One
- HP Officejet Pro 8650 e-All-in-One
- HP Officejet Pro 8640 e-All-in-One
- HP Officejet 6800
- HP Officejet Pro 6830
- HP ENVY 7640 e-All-in-One Printer series
- HP Officejet 5740 e-All-in-One Printer series
- HP ENVY 8000 e-All-in-One Printer series
- HP Officejet 8040 e-All-in-One Printer series
- HP Desk Jet 3110 series
- HP Officejet 3110 series
- HP Officejet 7510 series
- HP Desk Jet 4650 series
- HP Desk Jet 4670 series
- HP Page Wide Pro 477dw
- HP Page Wide Pro 477dn
- HP Page Wide Pro 577
- HP Officejet Pro 8720
- HP Officejet Pro 8740
- HP Officejet Pro 8710
- HP Officejet Pro 8730
- HP Page Wide 377dw MFP
- HP Page Wide Managed MFP P57750dw
- HP Officejet Pro 6960 All-in-One Printer
- HP Officejet Pro 6970 All-in-One Printer
- HP Officejet 6960 All-in-One Printer
- HP Desk Jet 5730 series
- HP Officejet Pro 7740 Wide Format All-in-One
- HP Officejet Pro 7720 Wide Format All-in-One
- HP Officejet Pro 7730 Wide Format All-in-One
- HP ENVY Photo 7800 All-in-One Printer series
- HP Officejet 5200 All-in-One
- HP Desk Jet Ink Advantage 5275 All-in-One
- HP Page Wide MFP P77740-60zs
- HP Page Wide MFP P77740-60z
- HP Page Wide Pro MFP 772-777z
- HP Page Wide MFP P77740-60
- HP Page Wide Pro MFP 772-777
- HP Officejet Pro 9010 series
- HP Officejet Pro 9020 series
- HP Officejet 9010 series
- HP Officejet Pro 8020 series
- HP Officejet Pro 8030 series
- HP Officejet 8020 series
- HP Color LaserJet Pro M478f-9f
- HP LaserJet Pro M428f-M429f

HP UFD support is limited to network only on all OS for the products below:

- HP LaserJet M1536dnf MFP
- HP LaserJet CM1410 Series
- HP LJ300-400 color MFP M375-M475
- HP LaserJet 400 MFP M425
- HP LaserJet 200 color MFP M276
- HP LaserJet 500 color MFP M570
- HP Color LaserJet Managed MFP E87640, E87650 & E87660
- HP LaserJet Managed MFP E72525, E72530 & E72535
- HP LaserJet Managed MFP E77822, E77825 & E77830
- HP LaserJet Managed MFP E82540, E82550 & E82560
- HP Smart Tank 610 series

- HP LaserJet MFP M631 M632 M633
- HP LaserJet E62555-E62575
- HP LaserJet E62655-E62675
- HP Color LaserJet MFP M681 M682
- HP Color LaserJet E67550 E67560
- HP Color LaserJet E67650 E67660
- HP LaserJet MFP M528
- HP LaserJet MFP E52645
- HP LaserJet MFP E82540-50-60
- HP Color MFP E87640-50-60
- HP LaserJet MFP E72525-30-35
- HP Color MFP E77822-25-30
- HP LaserJet MFP E72425 E72430
- HP Color LaserJet MFP E77422 E77428
- HP Color LaserJet MFP M776
- HP Color LaserJet Pro MFP M183fw
- HP Color LaserJet Pro MFP M185fw
- HP Color LaserJet Pro MFP M283fdn
- HP Color LaserJet Pro MFP M285fdn
- HP Color LaserJet Pro MFP M283fdw
- HP Color LaserJet Pro MFP M285fdw
- HP PageWide Managed Color MFP E58650
- HP PageWide Enterprise Color Flow MFP 586
- HP PageWide Enterprise Color MFP 780-785
- HP PageWide Managed Color MFP E77650-E77660
- HP PageWide Managed Color P77440 P77940-60
- HP PageWide Color MFP 774 779
- HP Color LaserJet Managed MFP E57540
- HP Color LaserJet Enterprise MFP M577
- HP LaserJet Enterprise flow MFP M830
- HP Color LaserJet Enterprise flow MFP M880
- HP Color LaserJet MFP E78223
- HP Color LaserJet MFP E78228
- HP LaserJet MFP M634 M635 M636
- HP Color LaserJet Managed MFP E78323, E78325 & E78330
- HP Smart Tank Plus 650

HP UFD supports USB and Network connectivity on all OS for the products below:

- HP LaserJet Pro MFP M521
- HP LaserJet Pro MFP M127-M128
- HP Color LaserJet Pro MFP M177
- HP Color LaserJet Pro MFP M476
- HP LaserJet Pro MFP M225-M226
- HP LaserJet MFP M129-M134
- HP LaserJet MFP M227-M231
- HP Color LaserJet MFP M278-M281
- HP Color LaserJet MFP M178-M181

HP UFD supports Network on all OS and Win 7 only for USB connection for the products below:

- HP Color LaserJet Pro MFP M277
- HP Color LaserJet Pro MFP M477
- HP LaserJet Pro MFP M426f-M427f

## Operating Systems

Client and server operating systems supported for this release of the UFD:

### Client operating systems supported:

- **Microsoft Windows 10**, Home, Pro, Enterprise; 32-bit and 64-bit.
- **Microsoft Windows 8 / 8.1**, Pro, Enterprise; 32-bit and 64-bit.
- **Microsoft Windows 7** Starter, Home Premium, Professional, Enterprise, and Ultimate; 32-bit and 64-bit • **Microsoft Windows Vista\*** Business, Enterprise, Home Basic, Home Premium, and Ultimate; 32-bit and 64-bit
- **Microsoft Windows XP\*\***† SP3 Home Edition, and Professional; 32-bit and 64-bit.

### Server operating systems supported:

- **Microsoft Windows Server 2019**
- **Microsoft Windows Server 2016**
- **Microsoft Windows Server 2012R2**
- **Microsoft Windows Server 2012**
- **Microsoft Windows Server 2008R2**
- **Microsoft Windows Server 2008**
- **Microsoft Windows Server 2003\*\***

\*Microsoft has ended mainstream support for this operating system. HP will continue to provide best effort support for the current UFD with this discontinued Windows operating system.

\*\*Microsoft has ended extended support for this operating system. HP will continue to provide best effort support for the current UFD with this discontinued Windows operating system.

\*\*Enterprise devices will not support in Windows XP/Windows Vista and Microsoft server 2003/2003R2

†MSXML Version 6.0 SP1 (MSXML6.1) and later is required before installing UFD 2.0.193.7861 or newer on this operating system. MSXML 6.0 SP1

## Citrix Support

- Microsoft Windows Server 2012 and 2012 R2 Editions and Microsoft Server 2016
  - o Citrix XenApp and XenDesktop 7.x
- Microsoft Windows Server 2008 R2
  - o Citrix XenApp 6.0
  - o Citrix XenApp 6.5

## Languages

The HP Universal Fax Driver v 2.0.193.7861 is available in the following languages:

Arabic  
Chinese (Simplified)  
Chinese (Traditional)  
Czech  
Danish  
Dutch  
English (American)  
Finnish  
French  
German  
Greek  
Hebrew  
Hungarian  
Italian  
Japanese  
Korean  
Norwegian  
Polish  
Portuguese  
Russian Spanish  
Swedish Turkish  
Romanian

Thai  
Indonesian  
Ukraine  
Vietnamese

## Installation instructions

### Installation Procedure

There are three methods to install the driver

- Install using the setup wizard.
- Install using Information (INF) driver package.
- Install using command prompt for Enterprise Environments.

### Method 1 - Install using the Setup Wizard

To install the driver using setup wizard, follow these steps:

1. Extract the HPUFD\_Installer.zip file to the location you like.
2. Navigate to the location where the files were extracted.
3. Run setup.exe and follow the onscreen instructions

### Method 2 - Install driver using Add Printer Wizard

**Note:** Installing through APW will install Dynamic Queue.

To install the driver using Add Printer Wizard, follow these steps:

1. Extract HPUFD\_DriverOnly.zip to a location of your choice.
2. Open **Devices and Printers** folder and click **Add a printer**.
3. Follow the onscreen instructions.

### Method 3 - Installation using command prompt for Enterprise setup (Highly Recommended).

**Note:** Only creates static queue using this method (Dynamic mode is not available in this case)

**Note:** User must run below mentioned commands in Administrator Mode.

#### Step 1: Install procedure:

##### Command 1:

```
rundll32 printui.dll, PrintUIEntry /ia /m "HP Universal Fax Driver" /h "x64/x86" /f "Driver Package path with inf file"
```

**Step 2: To create a static queue specific to printer**→ Traverse to Driver Package→Run below mentioned Command

##### Command 2

```
FaxPrinterUtility<64\32>.exe -OperationType AddUFD -PrinterAddress 192.168.1.1 -Type Enterprise
```

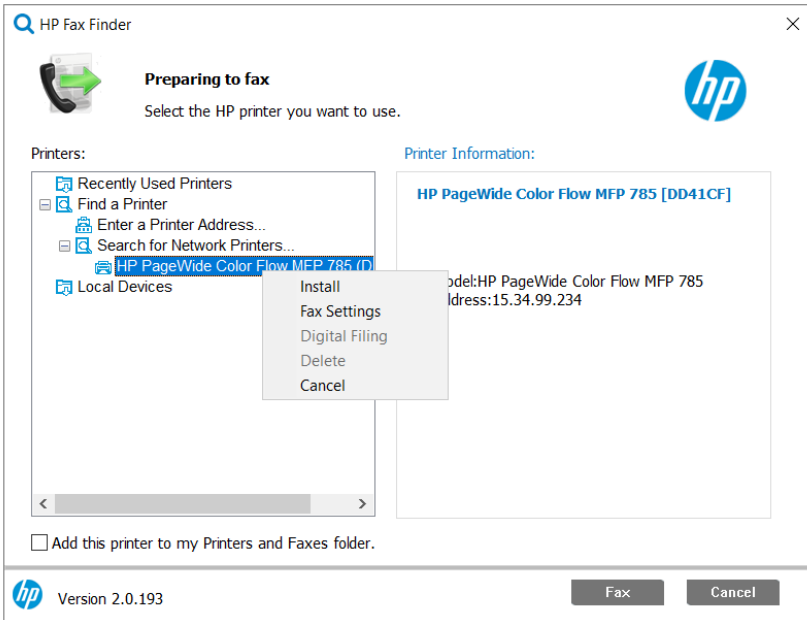
Note: UFD doesn't support point and print in Windows XP

Note: UFD will not work with Guest accounts

# Creating a static queue

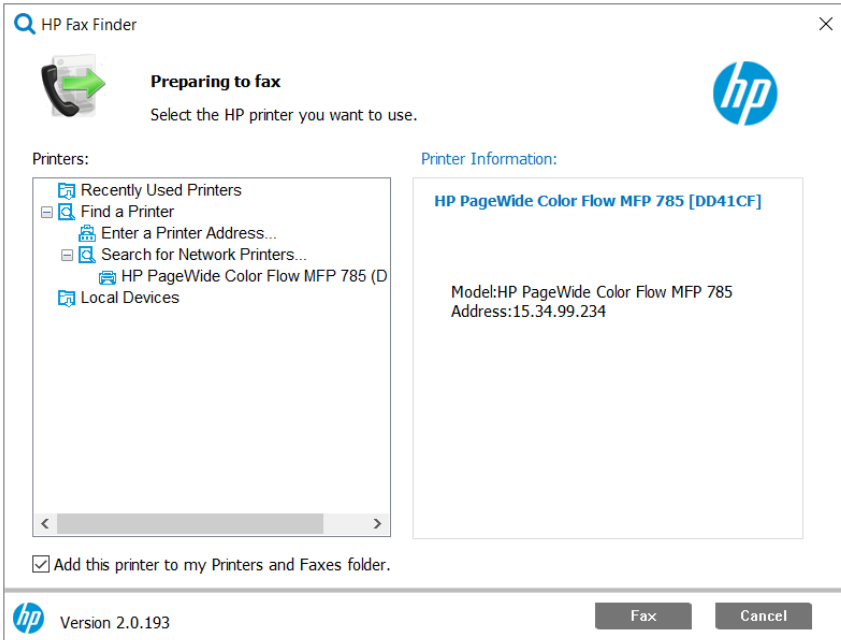
Create a static queue using one of the two ways.

1. Search for the network printers and select a required printer right click and install.



2. Check **Add this printer to my Printers and Faxes folder** box in the lower left corner of the HP Fax Finder dialog box which will allow the user to create a static queue for a selected printer.

Note: Adding a static queue will direct the user to the **Send Fax** dialog box.



## Enhancements/New Features

V2.0.86.0

- Supporting Enterprise class of devices.
- Group faxing: User will be able to send a fax to group of recipients.
- Confirmation Report: Fax Send Confirmation report for Enterprise class devices can be send via E-mail.
- Import contacts: Contacts can be imported which are exported from Enterprise class devices ((EWS page).
- Cover Page: cover page support for Enterprise class devices.
- Point and Fax

#### V2.0.134

- Thumbnail on confirmation
- Fax Archive
- Job Accounting (Track PC Fax jobs)
- Accessibility - All the content and the user interfaces are accessible, able to focus and read out correctly by the screen reader(s) – for Win OS: Narrator and NVDA.
- Send Fax UI support on Add Printer Wizard (APW) installation
- Easier command line installation for Enterprise customers

#### V2.0.166

- Ability for user to configure defaults in UFD.
- Job Accounting - Prompt user to provide user access code
- Enable custom cover letters in UFD
- Save and browse feature for custom cover letters in UFD
- Import contacts using Key Value pair selection (Name, Company name, Fax number from CSV data)
- Beta improvements

#### V2.0.193

- Support of advanced features in Custom cover page
- Enhancements to import contacts feature in UFD - Re-import scenario with updated CSV data
- Host based searching to discover the devices
- Addition of Export Contacts functionality in UFD
- Launch Fax configurations from UFD – EWS Page
- Support additional languages in UFD to match discrete Fax

## Known Limitations

- First job would get cancelled while switching between the devices in Dynamic mode.
- Device was unable to Communicate with UFD software" using standard user account for Enterprise devices.
- With higher resolutions and scaling, UFD driver UI screen font size and static controls may vary.  
[Ex: Resolution >= 1920 \* 1080 and scaling >= 150%]

## Issues and Workarounds

The following list contains the known issues in this release and available workarounds. HP targets resolution for these issues in future releases of the UFD.

Issue	Workaround
UFD Version not updated properly after uninstalling and re-install of another UFD version.	UFD may still be in use by the spooler, restarting the machine before uninstalling would fix this issue.
When the color Fax document having multiple layer of color contrast containing image/text sent as Mono Fax, some mismatch is observed.	Use Photo option as resolution to successfully send fax
While Importing outlook contacts Fax UI may close abruptly when the import button is clicked twice.	This issue is observed only with Microsoft office 2016 version. Microsoft has provided the fix for MAPI in the latest office updates. Upgrade to the latest Microsoft office version 2016 would fix this issue.