



PANTONE MATCHING SYSTEM®

PANTONE® Calibrated Color Support

Digital Library
User Guide

PANTONE[®] Calibrated Color Support

Digital Library User Guide

Pantone, Inc.
590 Commerce Boulevard
Carlstadt, New Jersey 07072
Phone 201.935.5500 • Fax 201.896.0242

PANTONE® and other Pantone, Inc. trademarks are the property of Pantone, Inc. Adobe, Illustrator, InDesign and Photoshop are either registered trademarks or trademarks of Adobe Systems Incorporated in the United States and/or other countries. Apple, Macintosh, Mac and Mac OS are trademarks of Apple Computer, Inc. Microsoft and Windows are either registered trademarks or trademarks of Microsoft Corporation in the United States and/or other countries. QuarkXPress is a trademark of Quark, Inc. and all applicable affiliated companies, Reg. U.S. Pat. & TM Off., and in many other countries. Macromedia and FreeHand are trademarks or registered trademarks of Macromedia, Inc. in the United States and/or other countries. Corel, Corel DESIGNER and CorelDRAW are trademarks or registered trademarks of Corel Corporation or and/ its subsidiaries in Canada, the United States and/or other countries. All other product names and trademarks are the property of their respective owners.

Any omission of such trademarks from any product is regretted and is not intended as an infringement on such trademarks.

© Pantone, Inc., 2006. All rights reserved.

Table of Contents

Importing Color Palettes into Desktop Publishing Applications	3
Supported Applications	3
System Requirements	4
Easy Install Applications	4
EPS, TIFF and Acrobat Charts	4
How to import and access a color palette:	5
Adobe Illustrator 9, 10, CS, CS2 & CS3:	5
Adobe Photoshop 6, 7, CS, CS2 & CS3:	6
Adobe InDesign 2.02, CS, CS2 & CS3:	7
Macromedia FreeHand 10 & MX:	8
CorelDRAW 10, 11, 12, X3 & Corel DESIGNER 10 & 12	9
QuarkXPress: Version 4.11, 5, 6 & 7	9
Technical Support	10
How to Contact Us	10

Importing Color Palettes into Desktop Publishing Applications

Custom CMYK data has been developed for 1,137 colors from the PANTONE® solid coated color library of the PANTONE MATCHING SYSTEM® for the optimal reproduction on a specific output device. Factors taken into consideration are ink set, screening, and substrate, all which can affect the output of color. This document is intended as a guide to help you use the PANTONE Calibrated palettes in your favorite desktop publishing and graphic design applications. To make it easy for you to use these visually calibrated colors, we have made a number of application-specific, ready-to-use palette files for a number of Macintosh and Windows® applications. The files provided have been organized and formatted for Macintosh and Windows operating system. Each of these folders contains a collection of platform and application specific visually calibrated palettes. There are folders by product name or software publisher to help you locate the particular file you are seeking.

Supported Applications

We have provided ready-to-use PANTONE calibrated palettes for a variety of design and publishing applications. In case, you don't see your favorite application supported, we have provided a PANTONE calibrated color chart in EPS, TIFF and PDF file formats. Most applications, if they are cross-platform, handle loading color palettes in identical ways. The instructions provided for the use of each file type, where appropriate, are cross-platform. If there are differences in handling color palettes, it will be noted accordingly.

Please note: It is best to refer to the user manual of the application being used for the most accurate and current information on color palette handling.

System Requirements

Windows: Microsoft® Windows 98, Windows 2000, Windows XP

Macintosh: Mac OS X version 10.2 and later

Easy Install Applications

Application	Software Version	File Extension
Adobe® Illustrator®	9*, 10, CS	.ai
	CS2, CS3	.acb
Adobe® Photoshop®	6*, 7, CS, CS2, CS3	.aco
Adobe® InDesign®	2.02, CS	.ai
	CS2 , CS3	.acb
Macromedia® FreeHand®	10, MX	bcf & .acf
CorelDRAW® Graphics **	10, 11, 12, X3	.pal & .cpl
Corel® DESIGNER® **	10, 12	.pal, cpl & .pl4
QuarkXPress®	4.11, 5, 6 7	.qxd
		.qci
EPS Charts		.eps
TIFF Charts		.tiff
Text Format		.txt
Adobe® Acrobat® Reader		.pdf

* Adobe Photoshop 6.0 & Adobe Illustrator 9.0 will require you to run in Mac OS X Classic Mode.

**CorelDRAW & DESIGNER will not be supported for MAC OS.

EPS, TIFF and Acrobat Charts

Some presentation or drawing programs may not be listed here as supported applications. If this is the case, you can bring your custom colors into these applications by using any of the appropriate color chart formats. For this to work, the application must have a tool (like an eyedropper) that you can use to pick up colors from an imported graphic. EPS and TIFF charts are also very useful in many applications because they are easy to import and apply. Additionally, the PANTONE Color Names are provided in the EPS and TIFF palettes, whereas some applications do not support naming colors in their native file or palette format.

How to import and access a color palette:

Adobe Illustrator 9, 10, CS, CS2 & CS3:

1. Go to Windows
2. Select “Swatch Libraries”

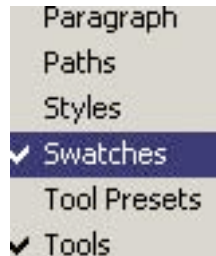


3. Select “Other Library”
4. Navigate to wherever you stored the palette
5. Select “Open”
6. Select any color from the alphabetical list.

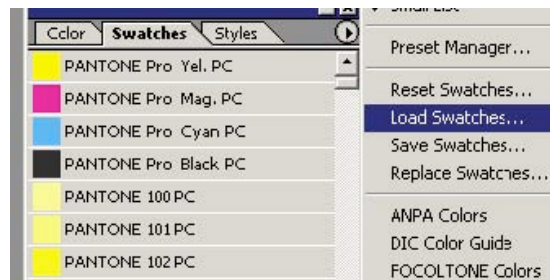
Adobe Photoshop 6, 7, CS, CS2 & CS3:

1. Go to Windows

2. Select Swatches



3. Click on the small circle/ arrow on the top right hand corner of the Swatches Window/ Select Load Swatches

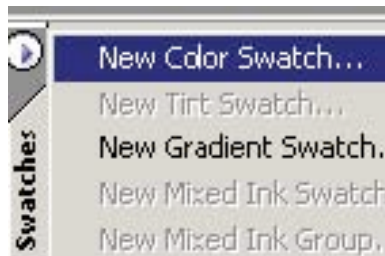


4. Navigate to wherever you stored the palette

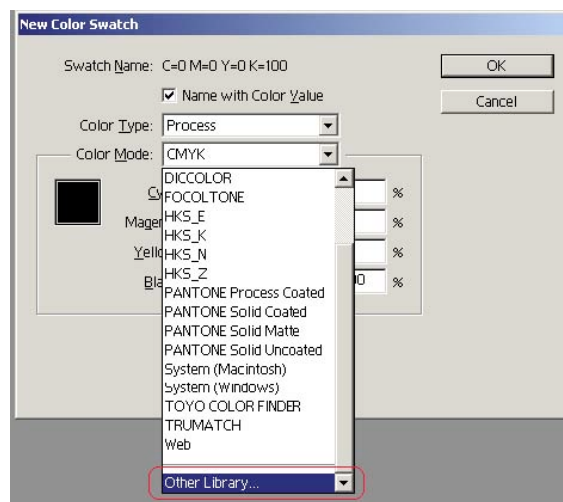
5. Select any color from the alphabetical list.

Adobe InDesign 2.02, CS,CS2 & CS3:

1. Unstuff the file enclosed in the Application Support files/ Mac/ Adobe/ Indesign folder onto your hard drive for Mac users.
2. Go to Windows
3. Select Swatches or F5
4. Click on the small circle/ arrow on the top right hand corner of the Swatches Window



5. Select “New Color Swatch”, “New Color Swatch” window will appear
6. Under “Color Mode” click on the pull down arrow to view the list of libraries.



7. Select “Other Library...”
8. Navigate to wherever you stored the palette
9. Select any color from the alphabetical list.

Macromedia FreeHand 10 & MX:

1. Open a new file or an existing file - Go to Window

PC users: Place both .acf & .bcf files in the following location:

Freehand MX

C:\DocumentsandSettings\YourUserAccount\ApplicationData\Macromedia\Free Hand MX\11\English\Settings\Colors

Freehand 10: you can store the palette in the Color folder in the Usenglish folder or in the FreeHand folder

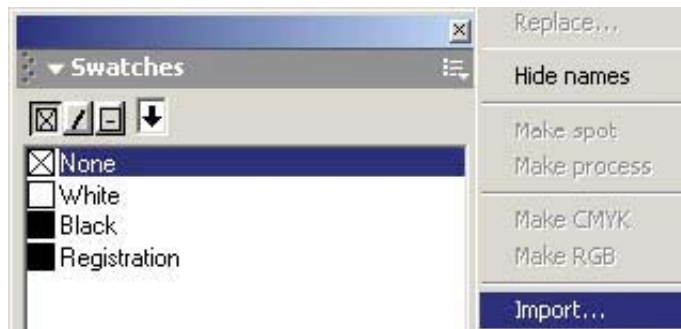
2. Select Panels – Swatches

When using FreeHand MX: Select Swatches

3. Click on the Options Menu Control Button to view all libraries



4. Select “Import”



5. Navigate to the palette for your printer

6. Select any color from the alphabetical list

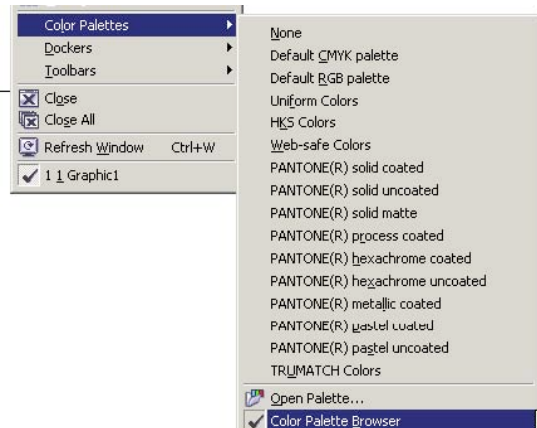
CorelDRAW 10, 11, 12, X3 & Corel DESIGNER 10 & 12

**** CorelDRAW & CorelDESIGNER file compatibility:**

CorelDraw 10 & 11: *.pal; CorelDraw 12 & X3: *.pal & *.cpl

CorelDesigner 10: *.pal & *.pl4; CorelDesigner 12: *.cpl,

1. Go to Windows
2. Select “Color Palettes”, and click on “Color Palette Browser”



3. Click on the folder/ arrow button on the top right hand side of the browser



4. Navigate to wherever you stored the palette
5. Select any color from the color palette.

QuarkXPress: Version 4.11, 5, 6 & 7

1. Open a New or Existing File in which you need to assign a PANTONE color.
2. From the menu bar, Edit > Colors
3. Click on the Append button
4. Navigate to wherever you have stored the files
5. Select “.qxd” document within the QuarkXPress folder
6. In the Append dialog box, select “Colors”.
7. Select the colors or “Include All” and click OK.
8. This will populate the color palette with your Pantone calibrated color library – Click “Save”.

Technical Support

Pantone is committed to offering you immediate and polite technical support. Technical support is provided at no charge to registered users of our products. Please be sure to provide a concise description of your problem including your system specifics.

You can reach Pantone Technical Support several ways:

- 1) Telephone: 201-935-5500, Monday through Friday, 8:00 a.m. to 6:00 p.m., Eastern Time
- 2) Fax: 201-896-0242. Make sure you indicate whether you want a reply by telephone, fax or E-mail. Don't forget to include your telephone, fax number or E-mail address.
- 3) Online: <http://www.askpantone.com>

How to Contact Us

To reach our Customer Service Department, please call 866-726-8663 (866-PANTONE). For more information on other PANTONE Products, please visit our Web site at www.pantone.com.

NORTH AMERICA

Pantone, Inc.
590 Commerce Boulevard
Carlstadt, NJ 07072-3098 U.S.A.
Telephone: 201-935-5500
Fax: 201-896-0242
E-mail: corpnj@pantone.com

WESTERN EUROPE, MIDDLE EAST & AFRICA

Pantone U.K., Inc.
8 Stade Street, Hythe, Kent
CT21 6BD, England
Telephone: (44) 1303 269666
Fax: (44) 1303 264464
E-mail: Hinfo@pantone.co.uk

ASIA PACIFIC

Pantone Asia, Inc.
Room 1701, 17/F
No. 3 Lockhart Road
Wanchai, Hong Kong S.A.R.
Telephone: (852) 2724 8822
Fax: (852) 2724 8800
E-mail: sales@pantone.hk

D/A/CH AND EASTERN EUROPE

Pantone GmbH
Roonstrasse 23a
D-76137 Karlsruhe, Germany
TEL: (49) 721 82037 37
FAX: (49) 721 82037 38
E-mail: info@pantone.de