

HP PROCURVE SECURE ACCESS 700WL SERIES QUICK START GUIDE

This document guides you through the basic steps needed to install your HP ProCurve Option Card. If you have any problems during installation, see the *HP ProCurve Secure Access 700wl Series Installation Guide*.

ACCESS CONTROL SERVER ADMINISTRATIVE INTERFACE

Prior to installing the option card, go to the Equipment Status page on your Access Control Server or Integrated Access Manager, and display the Access Controller Details page (click the link of the appropriate Access Controller). This displays the network modules physically installed in your unit. In the example shown in Figure 1, the unit has a single 4-port 10/100 module installed in slot 1.

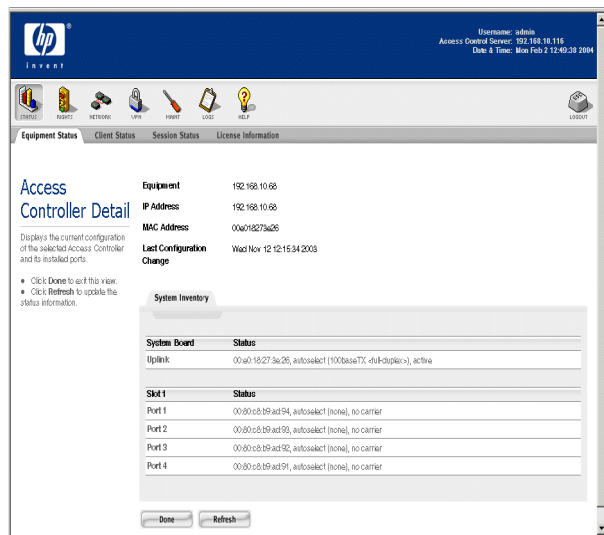


Figure 1: Initial system card configuration

Follow the directions on the reverse side of this Quick Start Guide to install the option card. Once the hardware has been installed, reboot the system.

The new module should appear in Access Controller Detail list. In the example shown in Figure 2, Slot 2 now displays information about the newly-installed 4-port 10/100 module.

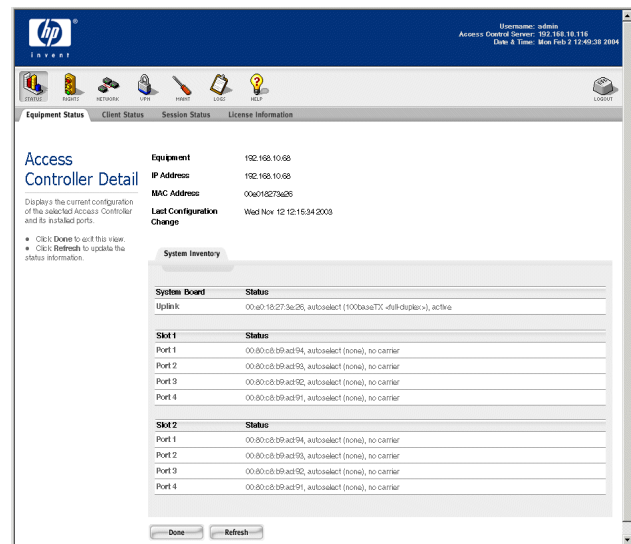


Figure 2: After adding new option card

ACCESS CONTROLLER COMMAND LINE INTERFACE

Before installation of a second option card, the **show slots** command should display output similar to:

```
show slots
Slots:      3
System Board:  2 Ethernet ports
Slot 1:      Empty
Slot 2:      Empty
Slot 3:      4 Ethernet ports
```

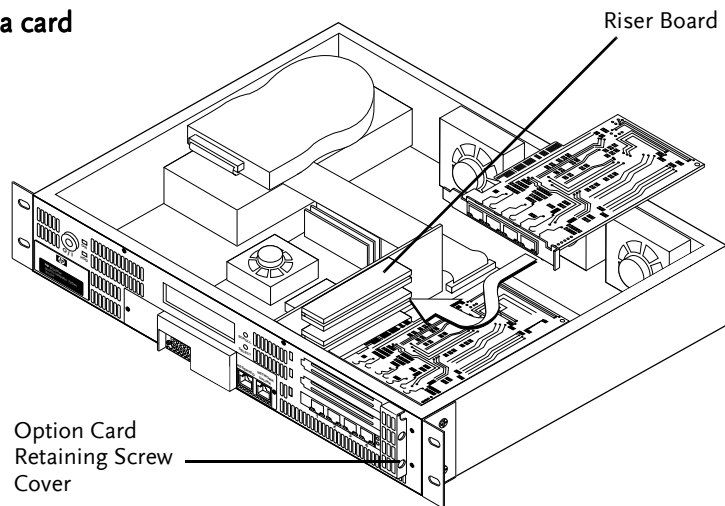
After installation of the new 4-port 10/100 module, the **show slots** command should display output similar to:

```
show slots
Slots:      3
System Board:  2 Ethernet ports
Slot 1:      Empty
Slot 2:      4 Ethernet ports
Slot 3:      4 Ethernet ports
```

INSTALLING THE OPTION CARD

1. Be sure that all cables have been removed, and attach a properly grounded ESD wrist strap to your wrist.
2. Remove eight screws that secure the top cover to the chassis, and remove the cover.
3. Insert a #2 Phillips-head screwdriver through the appropriate hole on the option card retaining screw cover, remove the screw holding the option card cover plate and remove the option card cover plate.
4. Remove the option card from its protective packaging, taking care not to damage it.
5. Insert the card into the chassis as shown in Figure 3. Be sure the option card seats firmly in the slot.

Figure 3: Adding a card



6. Using the screw removed in Step 3, secure the option card to the chassis by inserting the screw and screwdriver through the option card retaining screw cover.
7. Make sure the riser board is still perpendicular to the motherboard, and the option card is seated properly in and perpendicular to the riser board.
8. Replace the cover, making sure the cover clips secure the riser board, and reinstall the eight screws holding the cover to the chassis.
9. Reconnect the power cable.

YOUR NEW CARD IS NOW INSTALLED CORRECTLY.

LC-to-SC media converter for the HP ProCurve 1 Port Gigabit-SX option card: To connect an SC cable to this option card, use the LC-to-SC media converter shipped with the card. Remove any protective covers on the cables, card port and media converter at the time of connecting the converter.

Note: If you plan to use a port on an option card as the network uplink port, you will need to use the serial console interface to change the network uplink port. The uplink port cannot be reconfigured through the browser-based Administrative Interface. For instructions, see "[Configuration Using the Command Line Interface](#)" in the *Installation and Getting Started Guide*, specifically [Step 6](#) in the procedure.

If you need help with the installation of this card, see the *HP ProCurve Secure Access 700wl Series Installation Guide*.



Hewlett-Packard Company
8000 Foothills Boulevard
Roseville, CA 95747-5552
www.hp.com/go/hpprocurve

CAUTION: Blank option card cover plates and cover panels serve three important functions: they prevent exposure to hazardous voltages and currents inside the chassis; they contain electromagnetic interference (EMI) that might disrupt other equipment; and they direct the flow of cooling air through the chassis. Do not operate the system unless all cards, faceplates, front covers, and rear covers are in place.

Safety information for HP ProCurve Fiber Gigabit Ethernet Option Cards • Complies with CFR Chapter 1, Subchapter J, Part 1040.10. • IEC 60825-1: 1993, A1: 1997, A2: 2001; IEC 60825-2: 2000

CAUTION: Use of controls or adjustments or performance of procedures other than those specified herein and in the Installation Guide may result in hazardous radiation exposure.