

## 1 Verify Kit Contents

- HP ProCurve 802.11a AP Kit 160wl (5 GHz) with antenna adapter (HP 802.11a 160wl)
- HP ProCurve AP 520wl Software Upgrade CD-ROM
- Documentation:
  - Quick Installation Guide (this document)
  - Read Me First for the HP ProCurve 802.11a AP Card 160wl
  - Support/Warranty Information booklet
  - Regulatory and Radio Approvals booklet

### Additional Items Required

- Desktop PC or laptop with a CD-ROM drive
- Windows 95 or newer
- MS IE 5.5 or Netscape 6.0 or better web browser - **it may be necessary to disable the browser proxy server in order to access the AP interface**
- HP ProCurve Wireless Access Point 520wl (HP AP 520wl)

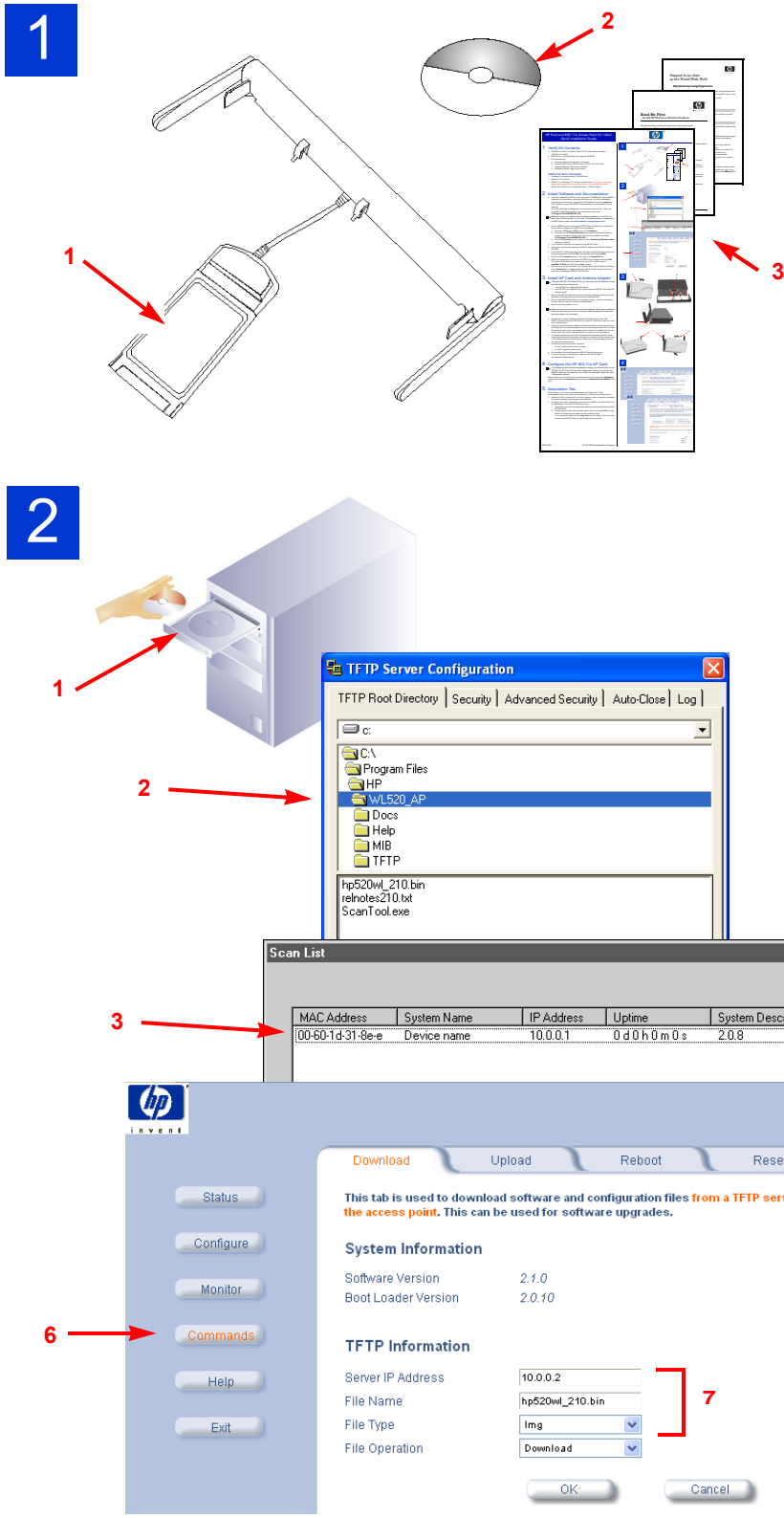
## 2 Install Software and Documentation

- Insert the installation CD into your computer CD-ROM drive and install the software, documentation, and help files from the CD. If the installation wizard does not auto-run, access your CD-ROM drive and run **setup.exe**. The ScanTool icon and the TFTP Server Install icon are installed on your desktop.

The rest of the files, including the Access Point software file (\*.bin), are installed in the following directory and subdirectories of it:  
**C:\Program Files\HP\WL520\_AP\.**

⇒ For the 802.11a 160wl kit, the software that you load on the AP must be version 2.1.0 or later. An appropriate version of the software is included on the CD that came with the 160wl kit. Newer versions of the software may be available and can be found on the HP ProCurve web site:  
<http://www.hp.com/go/hpprocurve>.

- Run the TFTP server or click on the TFTP Server Install icon to install the server. Then, configure the TFTP server as follows:
  - From the TFTP server **File** menu, click **Configure**.
  - Click the tab **TFTP Root Directory** and make sure that the directory named is the same as where the Access Point software is located (**C:\Program Files\HP\WL520\_AP\**).
  - Click the **Security** tab and make sure the **Transmit and Receive files** button is selected.
- Use ScanTool to find the IP address of the HP AP 520wl.
- Open your web browser and type in the IP address of the HP AP 520wl as the URL.
- On the HP AP 520wl login page, leave the user name field empty, enter your network password, and click **OK**. The default password is **public**.
- Click on the **Command** button, then select the **Download** tab.
- Fill in the information needed for the TFTP server transfer and click **OK**. The Server IP address is the address for your PC; the File Name is **hp520wl\_210.bin**; the File Type is **img** (image).
- Once the new image is loaded, you can reboot the HP AP 520wl by clicking on the **Reboot** tab, or simply unplug the HP AP 520wl and proceed to the next step, installing the HP 802.11a 160wl kit.



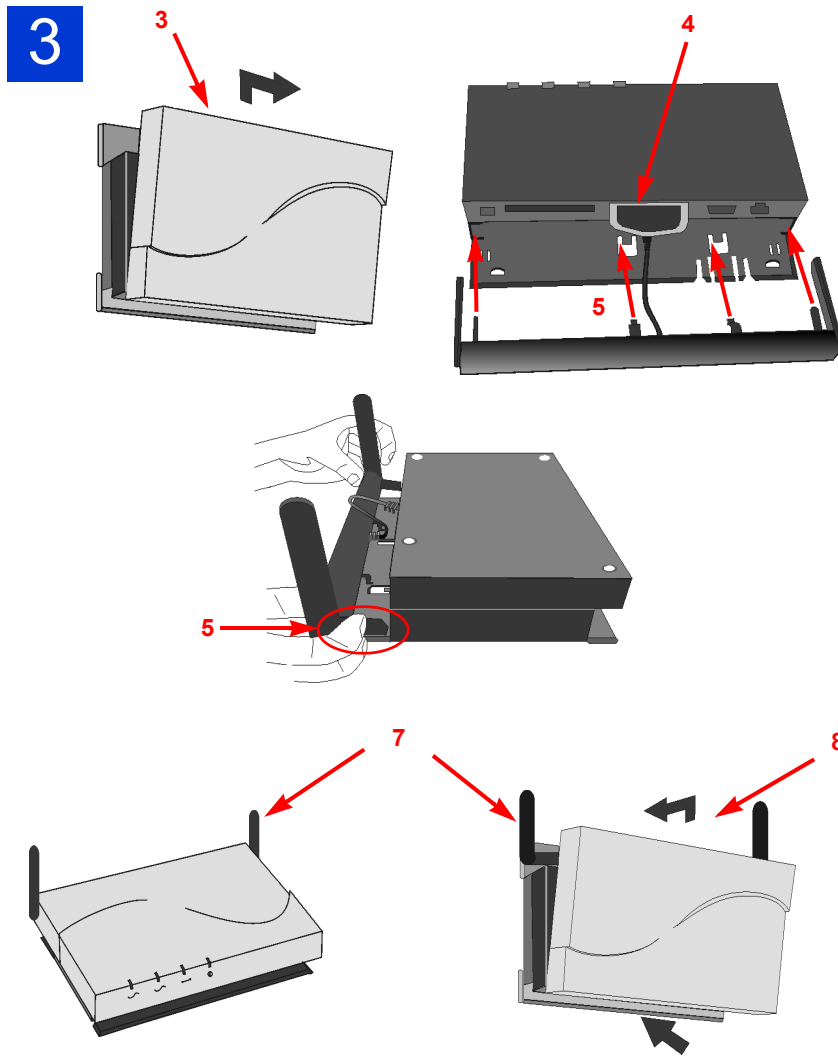
## 3 Install AP Card and Antenna Adapter

⇒ Using the HP 802.11a 160wl AP kit, you can set up an HP 520wl AP using the following card combinations:

- one HP 802.11a 160wl AP kit in slot A
- one HP 802.11a 160wl AP kit in slot A and one HP 802.11b 150wl AP Card in slot B

To eliminate strain on the antenna adapter cable, HP recommends that the HP 802.11a 160wl kit be installed only in slot A.

- Remove the HP AP 520wl from your network by unplugging the power and Ethernet cables from the unit (not shown in illustrations).
  - Remove the HP AP 520wl from its mounting location - keep the mounting bracket with the unit (not shown in illustrations).
  - Remove the outer plastic cover.
- ⇒ Make sure you have at least one card slot available. The power or Ethernet cable tie wrap may need to be cut and the cable repositioned to allow the antenna adapter to fit correctly.
- Position the antenna adapter with the AP Card facing the slot in the HP AP 520wl and insert the HP 802.11a 160wl AP Card all the way into card slot A until it stops.
  - Angle the antenna adapter slightly forward, pinch the end tabs inward, and carefully slide the antenna adapter onto the mounting bracket. The end tabs fit inside the sides of the mounting bracket and the two middle tabs fit into slots in the base of the mounting bracket, as shown in the illustration.
  - Continue to press the bar of the antenna into the mounting bracket while rotating the antenna downwards and clip two small tabs on the outside edge of the adapter into the small cutouts on the base of the mounting bracket (not shown in illustrations).
  - Position the antenna for best reception:
    - at a 90° angle for flat surface mounts
    - at a 180° angle for wall mounts
  - Re-install the cover and mount the HP AP 520wl back in place.
  - Connect the power and Ethernet cables to the HP AP 520wl (not shown in illustrations).



## 4 Configure the HP 802.11a AP Card

⇒ The following is the minimal configuration change you should make on the HP 802.11a AP Card. For the other configuration items, you can use the default values for now. See the User Guide for information about the other configuration options.

- Return to the Access Point web browser interface and click on the **Configure** button. Then, click on the **Interfaces** tab and enter a **Network Name (SSID)** for the card.
- Click on the **Security** tab, and then the **Encryption** tab.
  - Enable encryption for the 802.11a AP card.
  - Type in the alphanumeric WEP encryption key and select which key to use for encryption.  
**Make sure that you configure the clients with the same encryption information. Otherwise, the clients may not be able to associate with the HP AP 520wl.**



## 5 Association Test

(These steps are not shown in the illustrations. Please refer to the documentation that came with your wireless PC Card for more information.)

- Install an 802.11a wireless PC Card in a laptop or other computer, including the drivers and the client management software.
- Configure the PC card to match the network name (SSID) and the encryption information of the HP 802.11a AP card installed in the HP AP 520wl, then:
  - Verify that your client management software shows association with the HP AP 520wl.
  - Verify connectivity to the wireless client. If you are using DHCP, verify that an IP address gets assigned to the wireless client. You can test the connectivity additionally by executing a "Ping" from the client to the HP AP 520wl or any IP address on network.